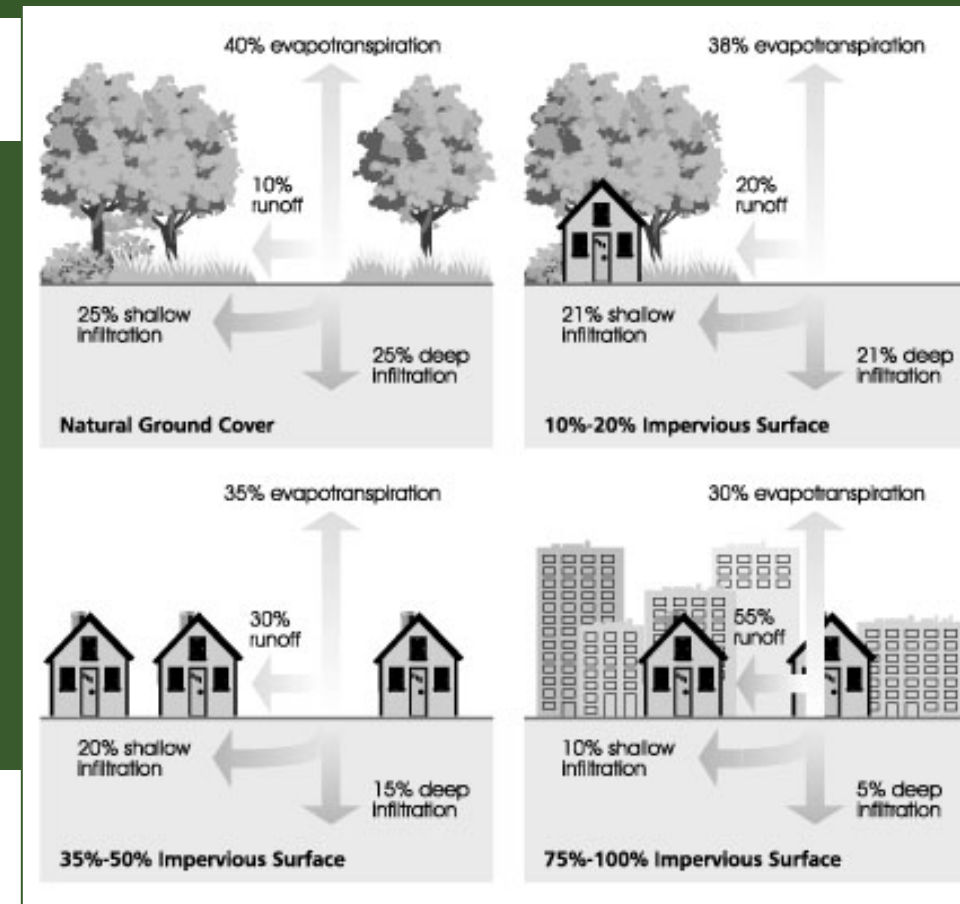


Integrating Low Impact Development into East Biloxi's Elevated Homes

The concentration of impervious surfaces in urban areas causes stormwater to pool as runoff that must be handled at ground level. Centralized management systems are designed for large storm events that overdrain watersheds during regular storms, and degrade water quality by quickly moving pollutants through urban centers into catchment basins.



LOW IMPACT DEVELOPMENT (LID) is a stormwater management system that mimics natural hydrologic systems. Rather than using costly centralized stormwater disposal systems, LID uses micro-scale (property-by-property) landscaping features to deal with runoff at its source. With techniques that infiltrate, filter, store, evaporate and detain stormwater as it hits the ground, LID can be an effective tool for minimizing the negative impacts of stormwater as it moves through urban areas.

LID an opportunity for East Biloxi



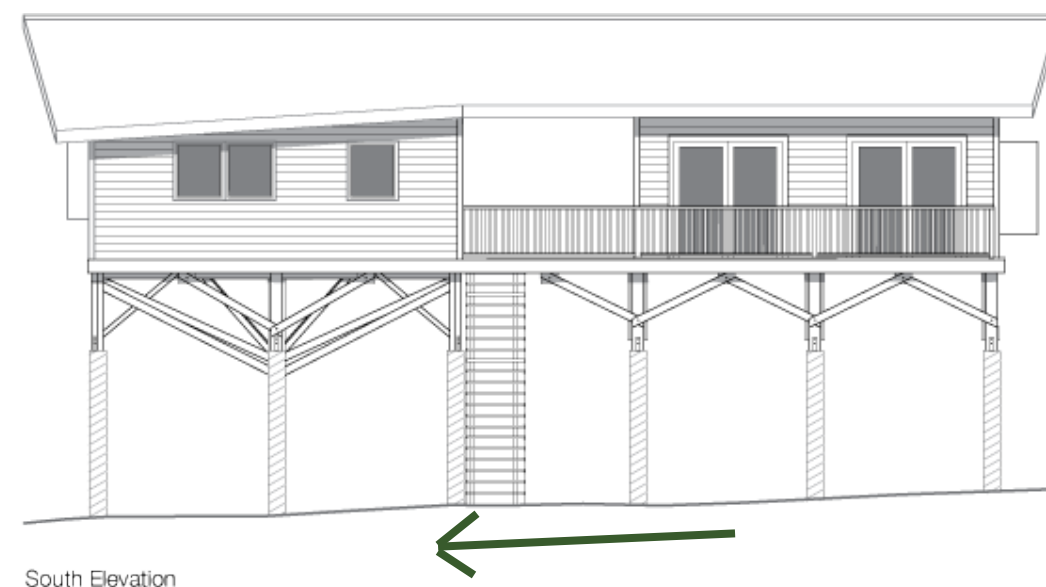
The problem of stormwater management is particularly acute for East Biloxi with its relatively flat terrain and location in a major flood plain.

Lifting homes above the ground decreases the amount of impervious surface on properties. With elevated homes being constructed throughout East Biloxi, this presents an opportunity for the newly-exposed ground to be incorporated into a network of LID stormwater management systems.

Design Principles

Consider Natural Topography

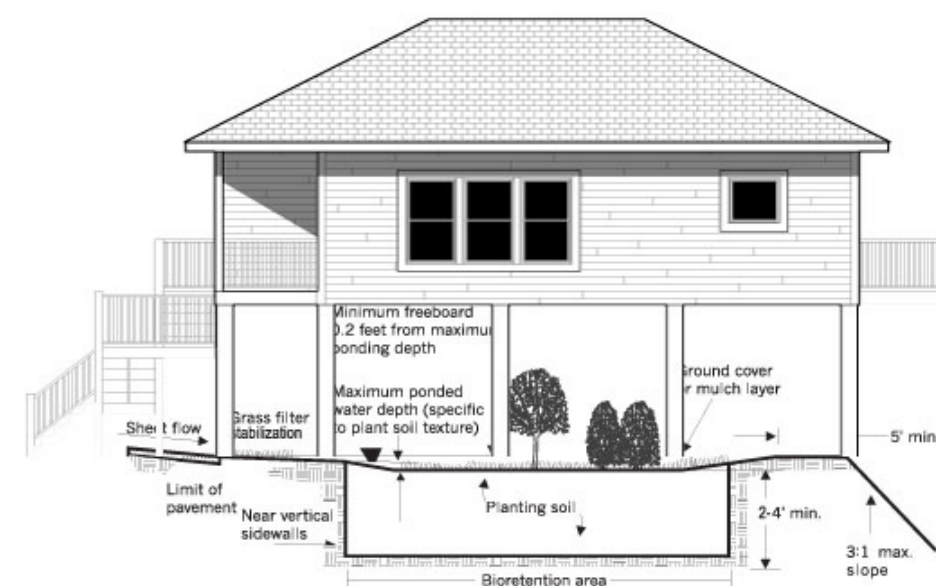
For most natural drainage pattern, siting of elevated structures should areas of property where stormwater runoff can move freely and won't pool under the structure.



Allowing the unconstrained movement of water means the space beneath raised buildings can be productively incorporated into the sites LID landscaping features.

Higher Elevated Buildings

Buildings that are elevated at least 6' above the ground are best suited for under-structure LID systems.



If properly sited, these spaces can host rather complex LID systems like dry wells or filter strips while still allowing access for maintenance.

Elevations high enough to allow significant sunlight to reach the space could be considered for bioretention or grassed swales.

Lower Elevated Buildings

Although space beneath lower elevated buildings are not ideal for moving runoff through, they can be utilized for more stationary LID techniques like rain barrels or cisterns.



NOTE:
1. RAIN BARREL TO BE KEPT AT HALF-FILLED DURING WINTER MONTHS TO PREVENT BARREL FROM BREAKING IF WATER IS FROZEN